



## 1,383 SF IN-LINE SPACE AVAILABLE

### DEMOGRAPHICS

	1 mile	3 miles	5 miles
Estimated Population	9,814	82,166	237,535
Avg. Household Income	\$94,987	\$105,774	\$112,359

- One of Kansas City's best retail intersections
- Across from new Wahlburgers restaurant, Super Target, AMC Theaters, Dick's Sporting Goods, Whole Foods, and over 1 million sq ft of retail
- Great visibility to 119th Street with monument signage
- Locate your business in one of the fastest growing areas in Greater Kansas City
- Join Olive Garden, Leslie's Pool, NTB, Drip Energy, Sleep Outfitters, and Red Lobster
- Intersection carries over 46,000 cars per day



CLICK HERE TO VIEW MORE LISTING INFORMATION

For More Information Contact:

MARK MCCONAHAY | 816.412.7386 | [mmconahay@blockandco.com](mailto:mmconahay@blockandco.com)

DAVID BLOCK | 816.412.7400 | [dblock@blockandco.com](mailto:dblock@blockandco.com)

Exclusive Agents





# BLACKBOB CORNERS

119th St. & Blackbob Rd. (NEC), Olathe, KS

LAST AVAILABLE  
IN-LINE SPACE  
FOR LEASE

## AERIAL

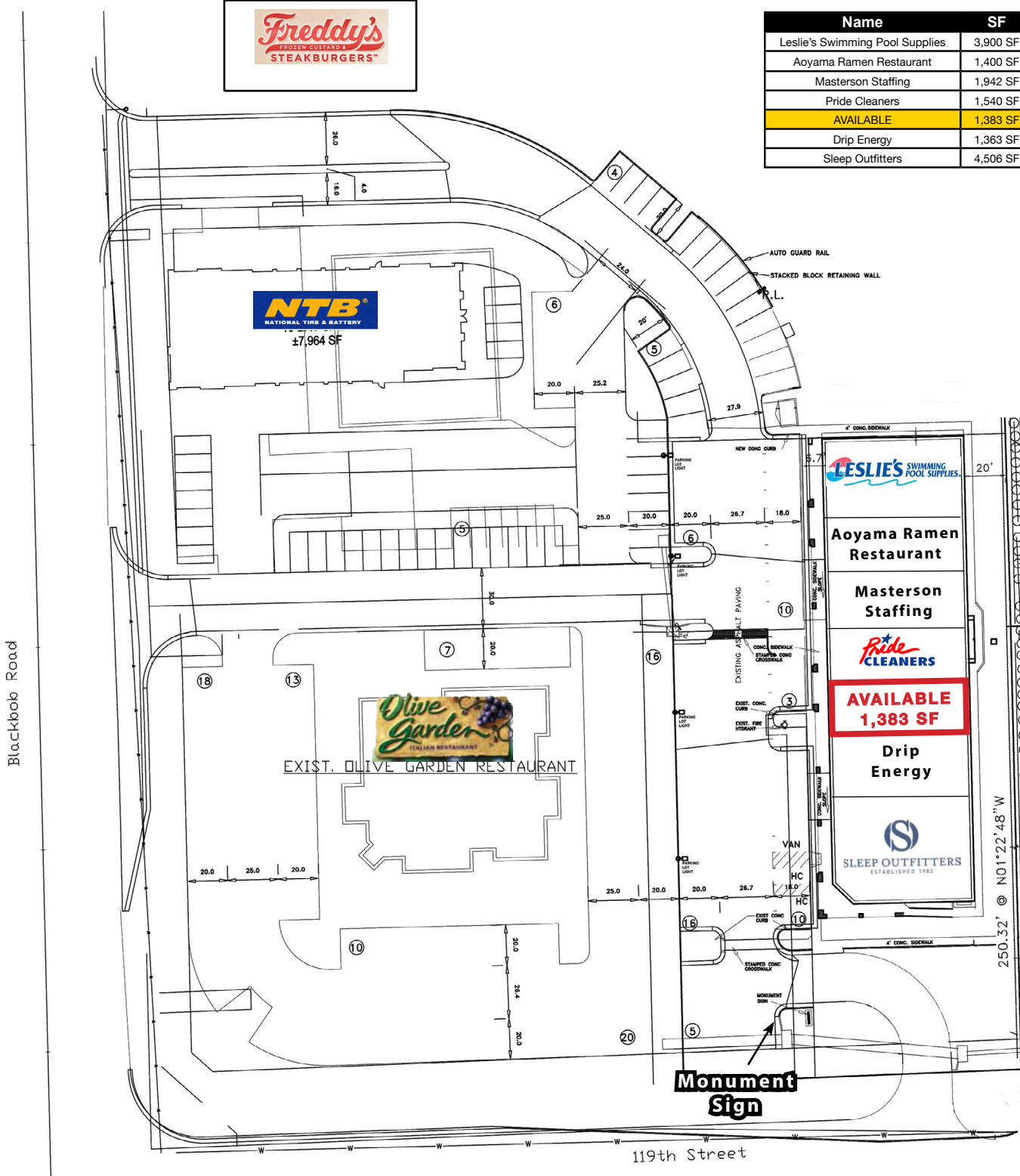




### SITE PLAN



Name	SF	Address
Leslie's Swimming Pool Supplies	3,900 SF	14970 W 119th St.
Aoyama Ramen Restaurant	1,400 SF	14960 W 119th St.
Masterson Staffing	1,942 SF	14950 W 119th St.
Pride Cleaners	1,540 SF	14940 W 119th St.
<b>AVAILABLE</b>	<b>1,383 SF</b>	<b>14930 W 119th St.</b>
Drip Energy	1,363 SF	14920 W 119th St.
Sleep Outfitters	4,506 SF	14910 W 119th St.

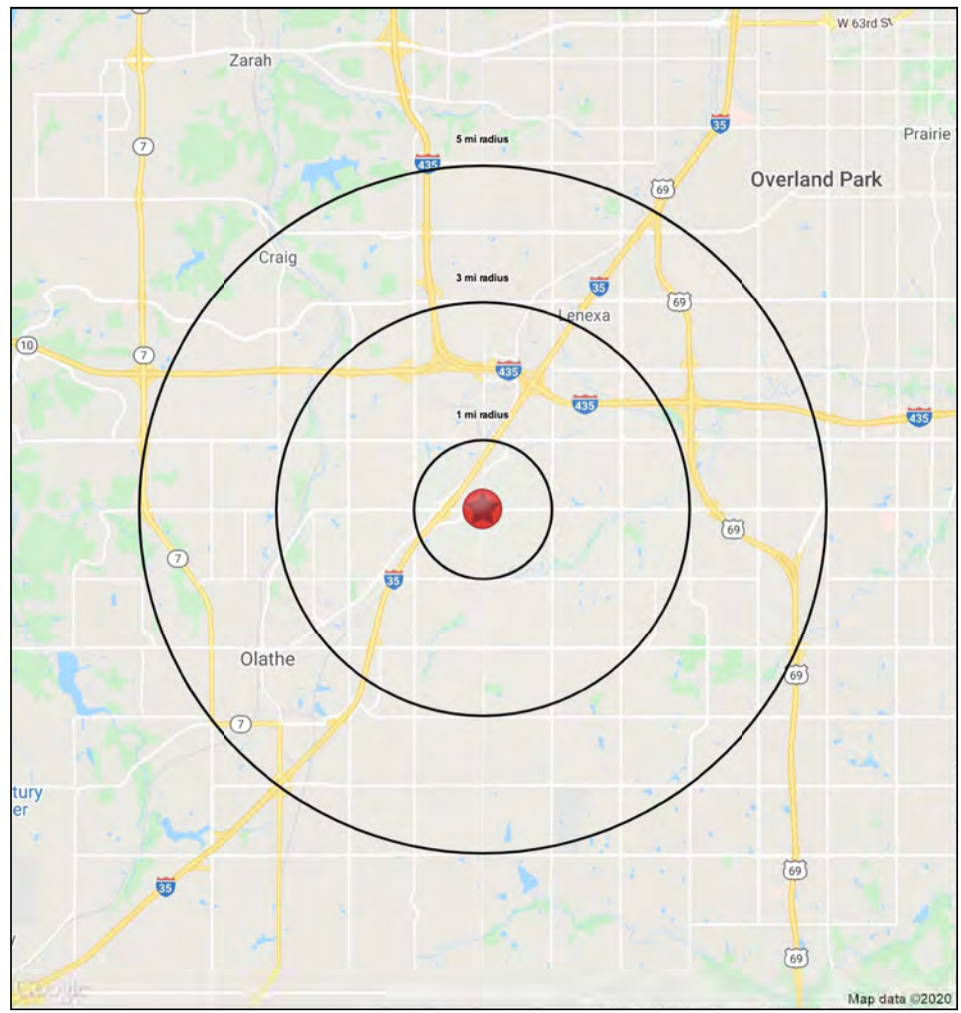
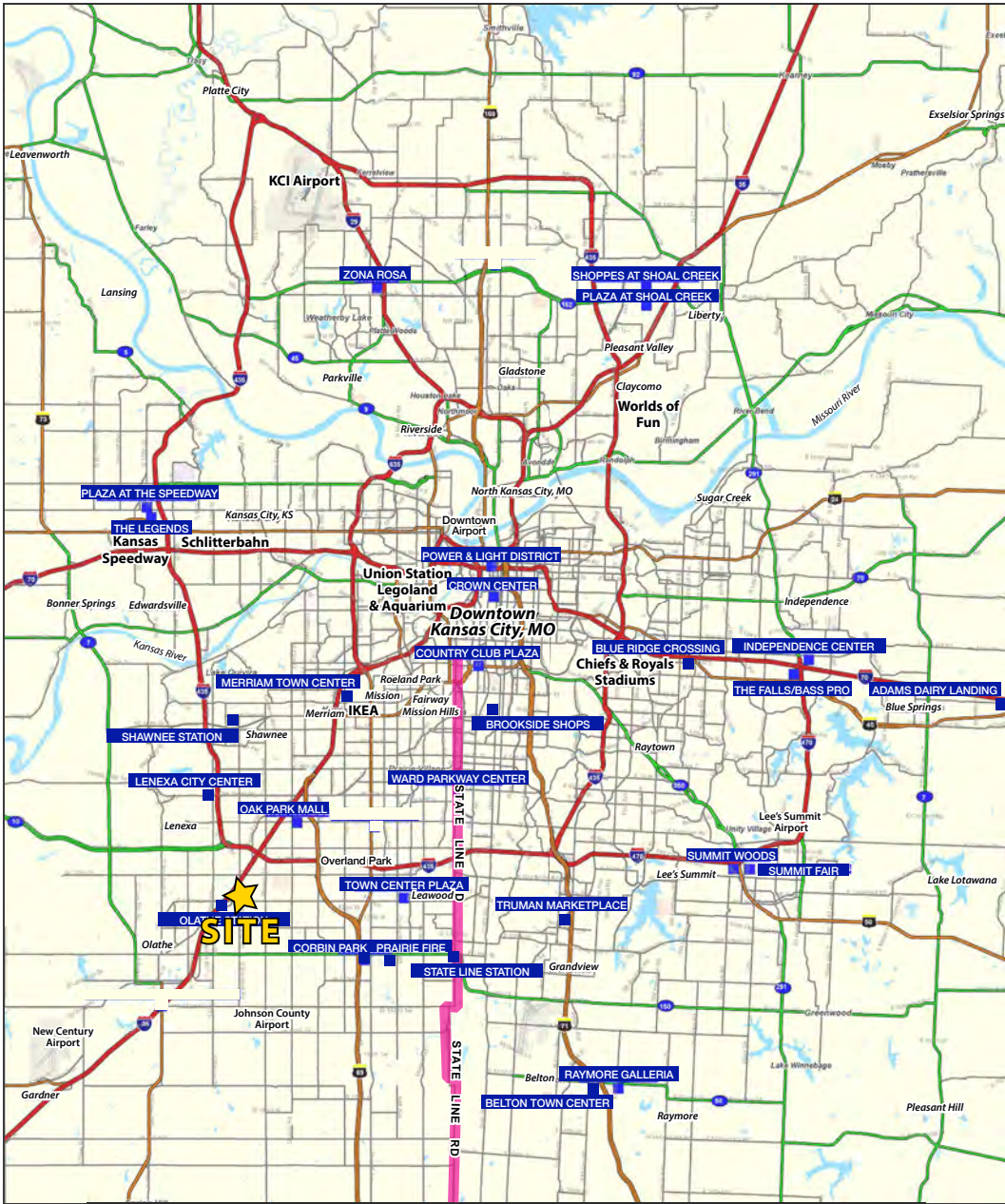




# BLACKBOB CORNERS

## 119th St. & Blackbob Rd. (NEC), Olathe, KS

### LAST AVAILABLE IN-LINE SPACE FOR LEASE







# BLACKBOB CORNERS

119th St. & Blackbob Rd. (NEC), Olathe, KS

SPACE  
FOR  
LEASE

119th & Black Bob Road Olathe, KS 66062	1 mi radius	3 mi radius	5 mi radius
<b>Population</b>			
2022 Estimated Population	9,814	82,166	237,535
2027 Projected Population	10,031	85,042	244,314
2020 Census Population	9,955	81,762	236,109
2010 Census Population	9,528	74,651	217,916
Projected Annual Growth 2022 to 2027	0.4%	0.7%	0.6%
Historical Annual Growth 2010 to 2022	0.2%	0.8%	0.8%
2022 Median Age	34.7	36.1	36.7
<b>Households</b>			
2022 Estimated Households	4,320	32,406	92,907
2027 Projected Households	4,490	34,073	97,019
2020 Census Households	4,372	32,206	92,299
2010 Census Households	4,075	29,218	83,808
Projected Annual Growth 2022 to 2027	0.8%	1.0%	0.9%
Historical Annual Growth 2010 to 2022	0.5%	0.9%	0.9%
<b>Race and Ethnicity</b>			
2022 Estimated White	74.9%	73.2%	74.1%
2022 Estimated Black or African American	6.8%	6.4%	5.9%
2022 Estimated Asian or Pacific Islander	5.2%	6.5%	6.5%
2022 Estimated American Indian or Native Alaskan	0.4%	0.5%	0.4%
2022 Estimated Other Races	12.7%	13.4%	13.0%
2022 Estimated Hispanic	10.5%	11.1%	10.5%
<b>Income</b>			
2022 Estimated Average Household Income	\$94,987	\$105,774	\$112,359
2022 Estimated Median Household Income	\$83,010	\$92,064	\$95,602
2022 Estimated Per Capita Income	\$41,910	\$41,820	\$44,034
<b>Education (Age 25+)</b>			
2022 Estimated Elementary (Grade Level 0 to 8)	2.9%	2.0%	2.0%
2022 Estimated Some High School (Grade Level 9 to 11)	2.6%	2.7%	2.7%
2022 Estimated High School Graduate	15.3%	16.1%	14.8%
2022 Estimated Some College	18.8%	20.1%	18.9%
2022 Estimated Associates Degree Only	10.6%	7.2%	7.6%
2022 Estimated Bachelors Degree Only	33.5%	33.6%	34.2%
2022 Estimated Graduate Degree	16.3%	18.4%	19.8%
<b>Business</b>			
2022 Estimated Total Businesses	595	3,730	9,454
2022 Estimated Total Employees	11,213	74,076	173,654
2022 Estimated Employee Population per Business	18.9	19.9	18.4
2022 Estimated Residential Population per Business	16.5	22.0	25.1

©2022, Sites USA, Chandler, Arizona, 480-491-1112 Demographic Source: Applied Geographic Solutions 6/2022, TIGER Geography - RS1

